

AUTHENTIC URBAN LIVE/WORK LOFTS IN VENICE / MARINA LOFT DISTRICT



CLASSIC CRAFTSMANSHIP FOR MODERN LIVING. All-new, adaptive reuse, 1960 double bow-truss building is now available for lease. Located just one block from the water and one mile from Abbot Kinney Blvd. Choose from a number of unique, custom lofts that feature up to three bedrooms and three bathrooms.

- Historic 60,000 square foot warehouse inventively remodeled as a complex of 30 new, live/work lofts
- Lofts range in size from 1,000 to 3,700 square feet
- Single and multi-level open floorplans with glass skylights and up to 30-foot ceilings
- Unique design details, including mezzanines, in-residence private elevators, fireplaces, balconies and patios
- Epoxy coated concrete floors
- Operable windows by Metal Window Co.
- Covered parking
- Commercially inspired kitchens, featuring appliances by Sub-Zero, Wolf and Viking
- Custom, Italian-made kitchen cabinetry by Boffi, with Carrera marble countertops
- Oversized bathrooms with soaking tubs, custom designed walnut vanities and Carrera marble countertops

CONTACT:

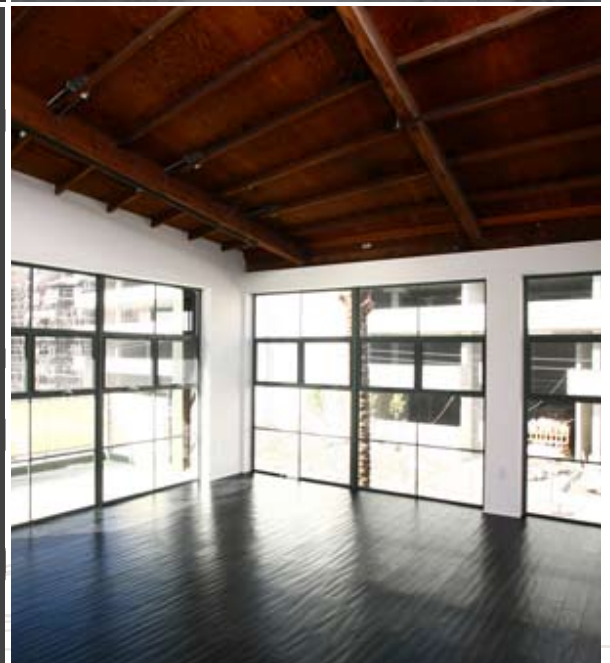
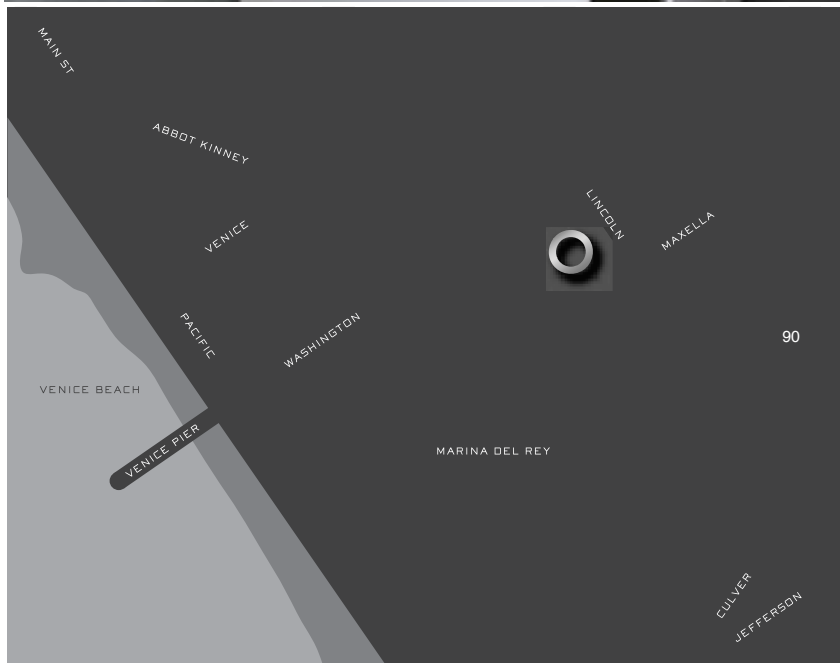
Tim Dornan
310.899.2723

Rudy Quintanar
310.899.2709

David Wilson
310.899.2707

1046 PRINCETON LOFTS

WWW.PRINCETON-LOFTS.COM



CONTACT:

Tim Dornan
310.899.2723

Rudy Quintanar
310.899.2709

David Wilson
310.899.2707

No warranty or representation is made to the accuracy of the foregoing information. Terms of sale or lease are subject to change or withdrawal without notice.

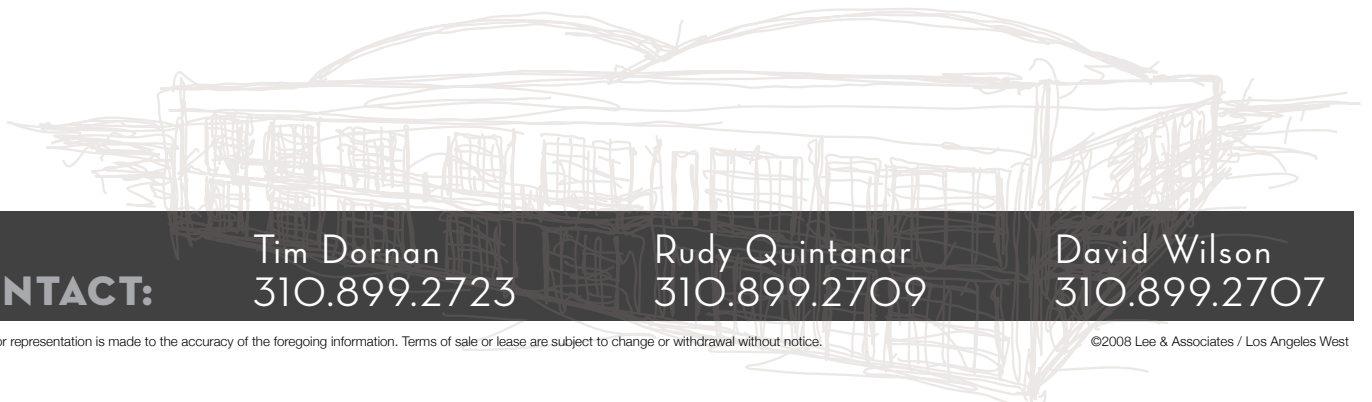
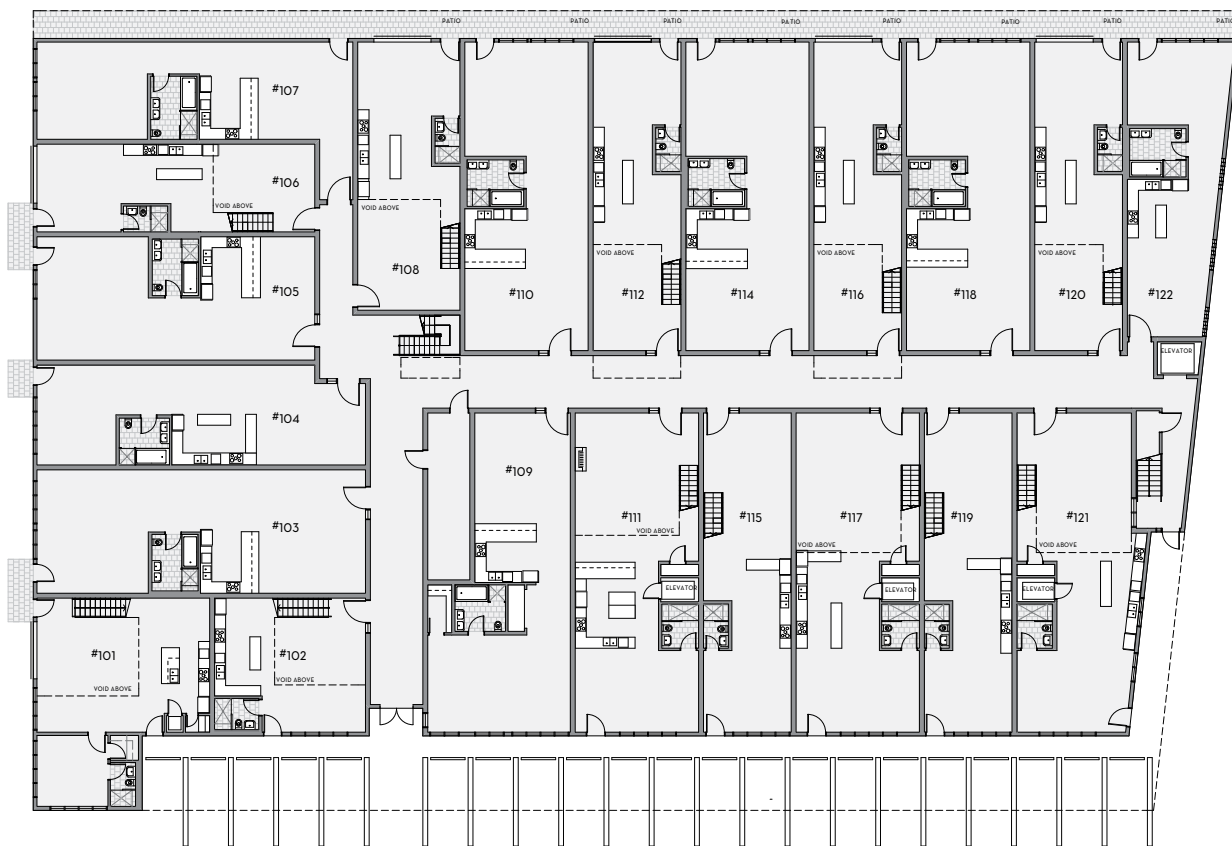
©2008 Lee & Associates / Los Angeles West

1046 PRINCETON LOFTS

WWW.PRINCETON-LOFTS.COM

PRINCETON LOFTS FLOORPLANS. Primed for personalization, Princeton Lofts feature up to 3,700 square feet, 30-foot high ceilings, available Boffi kitchens with Sub-Zero and Wolf appliances, concrete floors, Carrera marble countertops, expansive balconies and covered parking. Select from a variety of inspiring and expansive spaces, each with its own thoughtful design details and flexible floorplan.

GROUND FLOOR



CONTACT:

Tim Dornan
310.899.2723

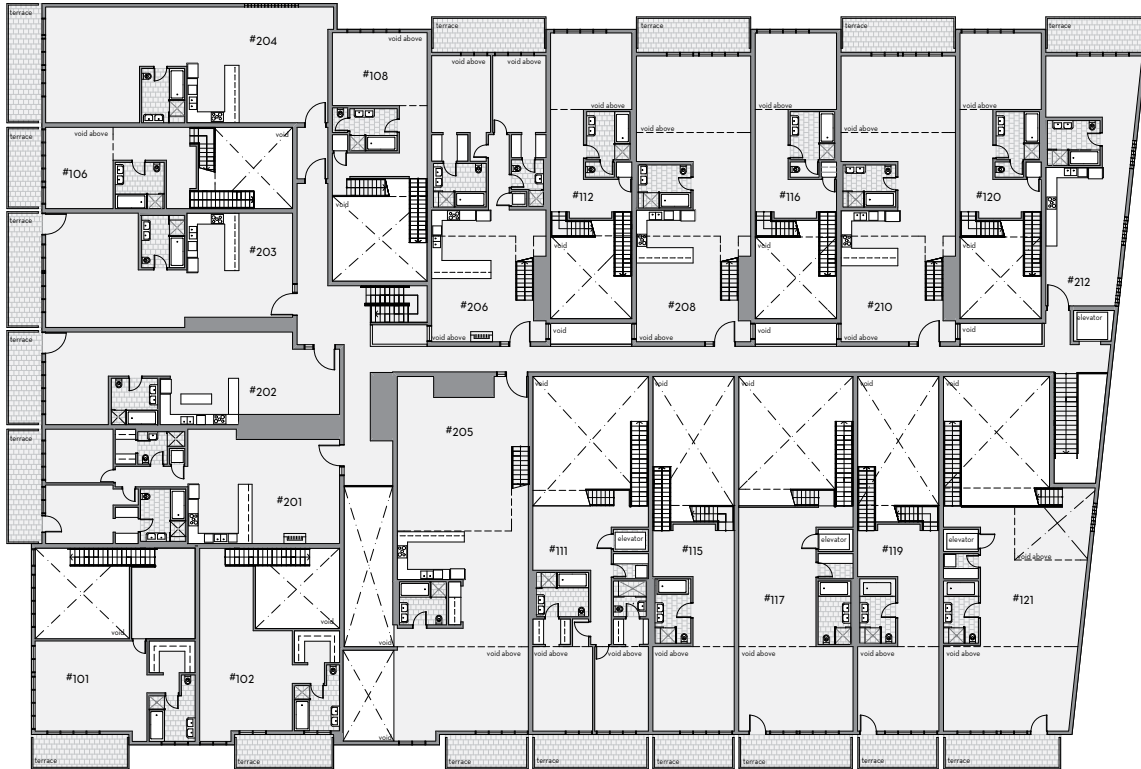
Rudy Quintanar
310.899.2709

David Wilson
310.899.2707

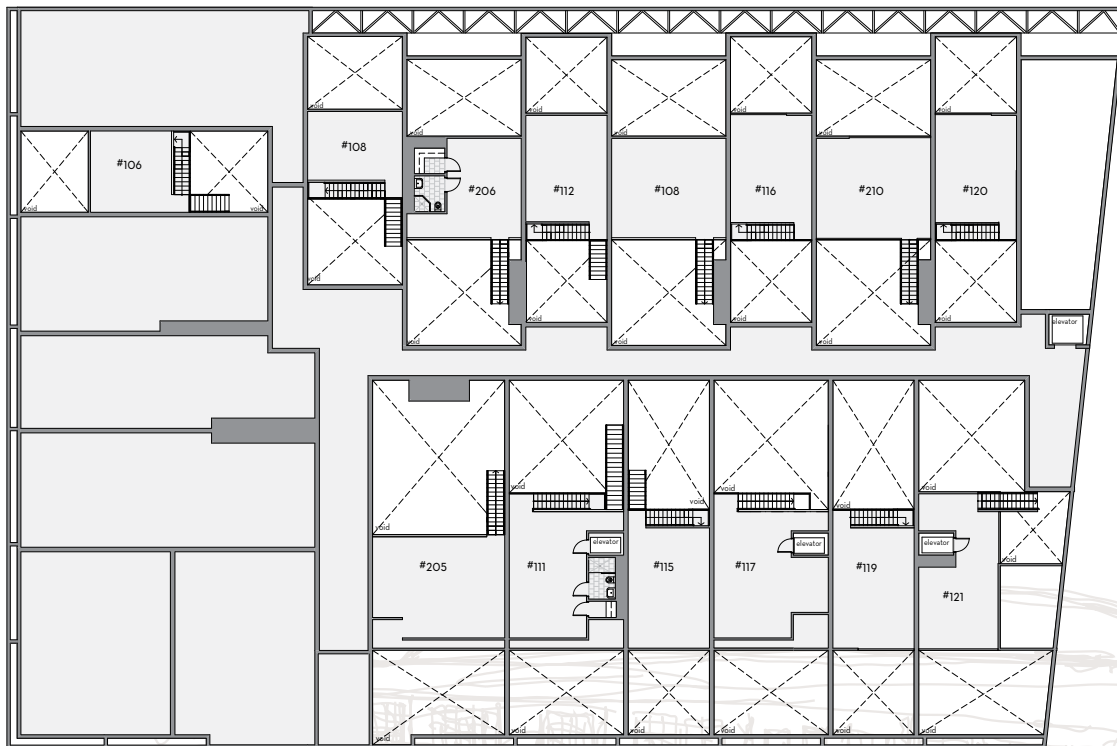
1046 PRINCETON LOFTS

WWW.PRINCETON-LOFTS.COM

SECOND FLOOR



THIRD FLOOR



CONTACT:

Tim Dornan
310.899.2723

Rudy Quintanar
310.899.2709

David Wilson
310.899.2707

Select from a variety of inspiring and expansive spaces, each with it's own thoughtful design details and classic craftsmanship. Then further customize your environment as much or as little as you please... and reinterpret the way you live, work and play.

| LOFT | SF | RENT | CEILING |
|--|-------|----------|----------|
| 101 | 2,300 | \$8,600 | 28 foot |
| 2-story, 2 bed / 2 bath corner, facing street with roll-up door, carport | | | |
| 102 | 1,600 | \$6,000 | 28 foot |
| 2-story, 2 bath with carport | | | |
| 103 | 1,700 | \$5,100 | 9.5 foot |
| Flat, open floorplan facing street, with patio | | | |
| 104 | 1,300 | \$3,900 | 9 foot |
| Flat, open floorplan facing street, with patio | | | |
| 105 | 1,400 | \$4,200 | 9 foot |
| Flat, open floorplan facing street, patio | | | |
| 106 | 2,000 | \$6,500 | 32 foot |
| 3-story, 2 bath facing street | | | |
| 107 | 1,400 | \$4,200 | 9 foot |
| Flat, open floorplan facing street | | | |
| 108 | 2,100 | \$6,800 | 32 foot |
| 3-story, 2 bath facing East | | | |
| 109 | 1,600 | | 9 foot |
| Open floorplan facing West | | | |
| 110 | 1,600 | \$4,800 | 9 foot |
| Flat, open floorplan facing East, rollup | | | |
| 111 | 3,800 | \$14,000 | 9 foot |
| 3-story, 2 bed / 4 full bath, elevator, fireplace, carport | | | |
| 112 | 2,300 | \$6,900 | 32 foot |
| 3-story, 2 bath facing East, with roll-up door | | | |
| 114 | 1,600 | \$4,800 | 9 foot |
| Flat, open floorplan facing East | | | |
| 115 | 2,500 | \$7,500 | 32 foot |
| 3-story, 2 bath facing West, with carport | | | |

CONTACT:

Tim Dornan
310.899.2723

Rudy Quintanar
310.899.2709

David Wilson
310.899.2707

1046 PRINCETON LOFTS

www.princeton-lofts.com

| LOFT | SF | RENT | CEILING |
|---|-------|----------|---------|
| 116 | 2,300 | \$6,900 | 32 foot |
| 3-story, 2 bath facing East, with roll-up door | | | |
| 117 | 3,800 | \$13,300 | 32 foot |
| 3-story, 2 bath facing west, carport | | | |
| 118 | 1,600 | \$4,800 | 9 foot |
| Flat, open floorplan facing East | | | |
| 119 | 2,500 | \$7,500 | 30 foot |
| 3-story, 2 bath facing West, with carport | | | |
| 120 | 2,300 | \$6,900 | 30 foot |
| 3-story, 2 bath facing East, with roll-up door | | | |
| 121 | 3,700 | \$12,950 | 30 foot |
| 3-story, 2 bath facing West, elevator, fireplace, carport, end unit | | | |
| 122 | 1,100 | | 9 foot |
| Flat corner, open floorplan facing street | | | |
| 201 | 1,600 | \$5,600 | 20 foot |
| 2-bed / 2 bath, facing street, fireplace, balcony | | | |
| 202 | 1,200 | \$3,900 | 13 foot |
| Flat, open floorplan facing street, with balcony | | | |
| 203 | 1,300 | \$4,200 | 20 foot |
| Flat, open floorplan facing street, with balcony | | | |
| 204 | 1,800 | \$5,900 | 20 foot |
| Flat, open floorplan facing street, with balcony | | | |
| 205 | 2,900 | \$10,150 | 22 foot |
| 2-story, 2 bed / 3 bath facing West, with balcony | | | |
| 206 | 2,100 | \$7,900 | 22 foot |
| 2-story, 2 bed / 3 bath facing East, with fireplace | | | |
| 208 | 2,100 | \$6,800 | 22 foot |
| 2-story facing East | | | |
| 210 | 2,110 | \$6,800 | 22 foot |
| 2 -story facing East | | | |
| 212 | 900 | \$3,500 | 18 foot |
| Flat corner facing East | | | |

CONTACT:

Tim Dornan
310.899.2723

Rudy Quintanar
310.899.2709

David Wilson
310.899.2707

No warranty or representation is made to the accuracy of the foregoing information. Terms of sale or lease are subject to change or withdrawal without notice.

CREATIVE COMMERCIAL CONDOS

FOR LEASE VENICE / MARINA LOFT DISTRICT
1,000 SF - 3,700 SF INDIVIDUAL SPACES



1960 INDUSTRIAL DOUBLE BOW-TRUSS WAREHOUSE CONVERSION / ADAPTIVE REUSE

PARTNERS:



USES: COMMERCIAL / STUDIO / GALLERY / SHOWROOM / LIVE / WORK*

CONTACT:

Tim Dornan
310.899.2723

Rudy Quintanar
310.899.2709

David Wilson
310.899.2707

FOR ADDITIONAL INFORMATION WWW.PRINCETON-LOFTS.COM